

CCBHC PROGRAM UPDATE

NOMs Sampling Plan

December 2023 Vol. 1 Issue 3



New NOMs Reporting Requirements

Under our previous SAMHSA CCBHC grant, we were required to conduct a National Outcome Measure (NOMS) for all program participants at intake, every 6-months, and at discharge. To reduce administrative burden and to obtain data reflective of the broader CCBHC population, SAMHSA changed the required method and frequency of NOMs data collection. Now we are required to collect NOMs data on a random sample of OnPoint's CCBHC clients and only at three points in time: intake, a 6-month follow-up, and at discharge; no longer requiring administration at every 6-month increment. As we enter an 4 additional years of SAMHSA CCBHC-IA funding, we've adjusted the assessment workflow to align with these changes. A NOMS Sampling plan was developed and determined that through the CCBHC-IA program, we strive to collect NOMs data on 210 individuals in grant year one and 390 individuals within the four-year grant period.

NOMS Sampling Plan

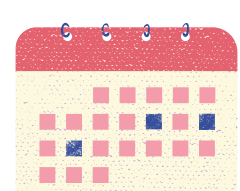
The CCBHC Data & Evaluation team developed and submitted a NOMs Sampling Plan to SAMHSA in November 2023. The Sampling Plan outlines our sampling rate and methodology to select 10% or every 1 in 10 clients to participate in NOMs data collection. The team will work with their IT Health Information Manager to create an EMR Client Flag and a Health Maintenance Alert. The alert will inform any staff who opens the client's record that this individual was randomly selected for NOMs administration and instruct them to complete the NOMs Intake document at today's service. Upon NOMs Intake completion via document signature, the Health Maintenance Alert will turn off and reset at 150 days to notify staff of the NOMS Reassessment due and again not turn off until completion of the NOMS Reassessment document.

Grant Year	New Clients	Sampling Rate	Annual NOMS Goal
Year 1	2,100*	10%	210
Year 2	600	10%	60
Year 3	600	10%	60
Year 4	600	10%	60
Overall			390



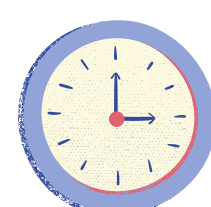
* A New Client is defined in three ways: (1) individuals who start CCBHC service for the first time after the grant start, (2) existing clients who have been receiving CCBHC services prior to the grant start, and (3) prior CCBHC clients who have been discharge for 90 or more days and are returning to CCBHC services.

Important Dates



Upcoming Events

- Smoking Cessation 6-week program. For more information, dates and times, call 269-686-5124 or 877-608-3568.



Due Soon

- 11/29/2023 – Disparity Impact Statement
- 12/30/2023 – SPARS Annual Goals
- 4/30/2023 – Quarterly IPP Reporting

