

# CCBHC PROGRAM UPDATE

## Start of a New Grant Year

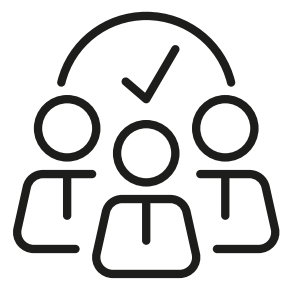
October 2024 Vol. 2 Issue 1



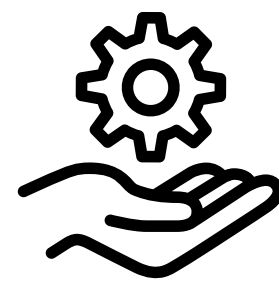
### OnPoint enters into SAMHSA's CCBHC-IA Grant Year 2

As OnPoint enters its second year of both the Certified Community Behavioral Health Clinic Improvement & Advancement (CCBHC-IA) grant and Michigan CCBHC Demonstration, we take a moment to celebrate our achievements and reaffirm our commitment to expand access to and transform our community's behavioral health system. By providing comprehensive and coordinated care for all ages, OnPoint is committed to addressing the critical needs in the community, ensuring that everyone, regardless of their circumstances, can access the support they need. OnPoint's holistic approach reduces barriers to care and ensures that individuals have equal access to services, fostering positive health outcomes for all. OnPoint ensures the availability of 24/7 crisis intervention services as they are crucial for those facing a mental health or substance use crisis, allowing for timely assistance when it matters most.

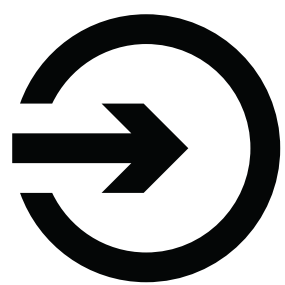
### What sets CCBHCs apart from Community Mental Health Centers



**Staffing** - Staffing plan is driven by a local community needs assessment. Staff are licensed and accredited, adequately trained in evidence-based recovery-oriented care, person- and family-centered, trauma-informed, and culturally and linguistically competent



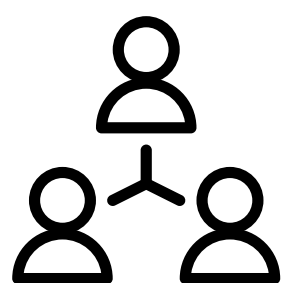
**Scope of Services** - Nine required services, including services for military members, that are comprehensive, evidenced-based, person-centered, family-centered, trauma informed, and recovery-oriented.



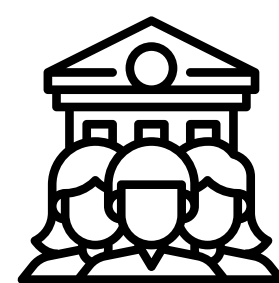
**Availability and Accessibility of Services** - Services delivered at times and locations convenient for those requesting services, timely access to services, addressing barriers to care, outreach and engagement, 24/7 access to crisis services, and acceptance of all patients regardless of ability to pay or place of residence



**Quality and Other Reporting** - Collect, report, and track encounter, outcome and quality data. Preventative Care quality measures including screenings for Suicide Risk, Depression, Tobacco, Unhealthy Alcohol Use and Social Drivers of Health. Continuous Quality Improvement plans and monitoring.



**Care Coordination** - Partnership with providers across the spectrum of health services (physical & behavioral healthcare, social services, housing, schools, criminal justice and other systems) to help clients navigate and access the full array of supports available for whole health wellness and recovery.



**Organizational Authority and Governance** - A local government behavioral health authority, non-profit organization or an authority of (or in contract with) the Indian Health Service. Consumer representation in governance. Board Composition with no more than 50% of members with 10% of annual income from the health care industry.

### CCBHC Year 1 Successes

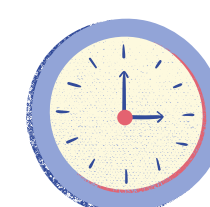
- OnPoint offers all 9 Core CCBHC services
- Transitions to a Same Day Access Center
- Conducts a CCBHC Community Needs Assessment
- Updates OnPoint's Staffing Plan in response to the Community Needs Assessment
- Outreach to underserved populations
- Monthly monitoring of CCBHC Quality Metrics
- Exceeds SAMHSA's Intake Rate target of 80%
- OnPoint receives Full CCBHC Certification status under Michigan CCBHC Demonstration

### Important Dates



#### Upcoming Events

Smoking Cessation 6-week program. For more information, dates and times, call 269-686-5124 or 877-608-3568.



#### Due Soon

- 10/31/24 – Quarterly IPP Reporting
- 12/28/24 – Annual Performance Report

Source: SAMHSA Certification Criteria March 2023

